

## Joyeux Aéromodélistes Gatinois (JAG) – New Flying Field – June 2013 – Updated February 2021

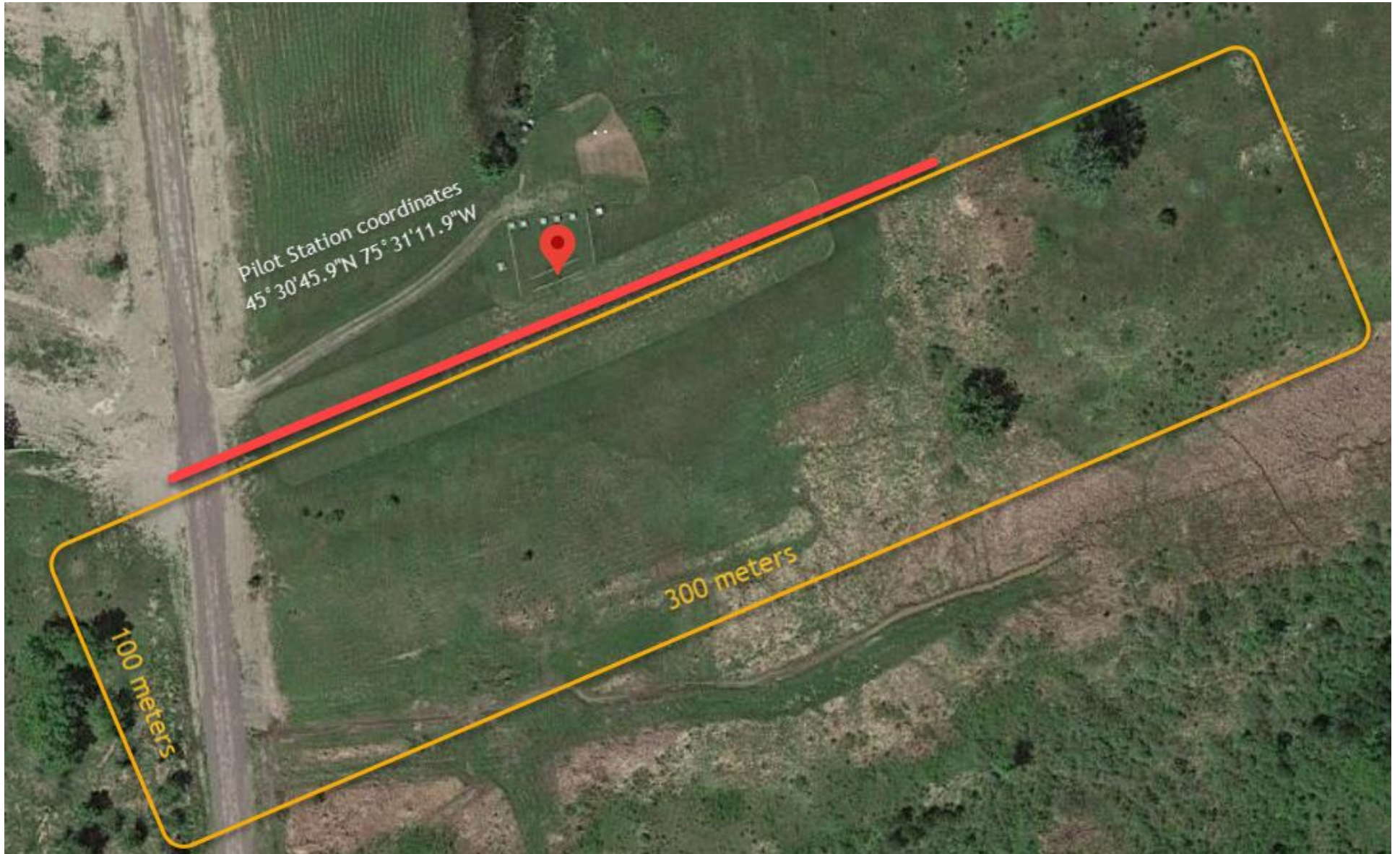
JAG has had to move its flying field in June 2013 after the city of Gatineau received a complaint regarding the restricted use of Agricultural land based on current zonal regulations, and forced the owner of the land to stop our activities under penalties of stiff fines. JAG is returning to the field previous used, but will limit its activities to strictly electric models due previous noise complaints at that location. The picture below shows the location of the old field from Google Map as well as a sketch layout (larger picture on next page).

<https://goo.gl/maps/8txGbQ2ejJ1AvuvQ7>



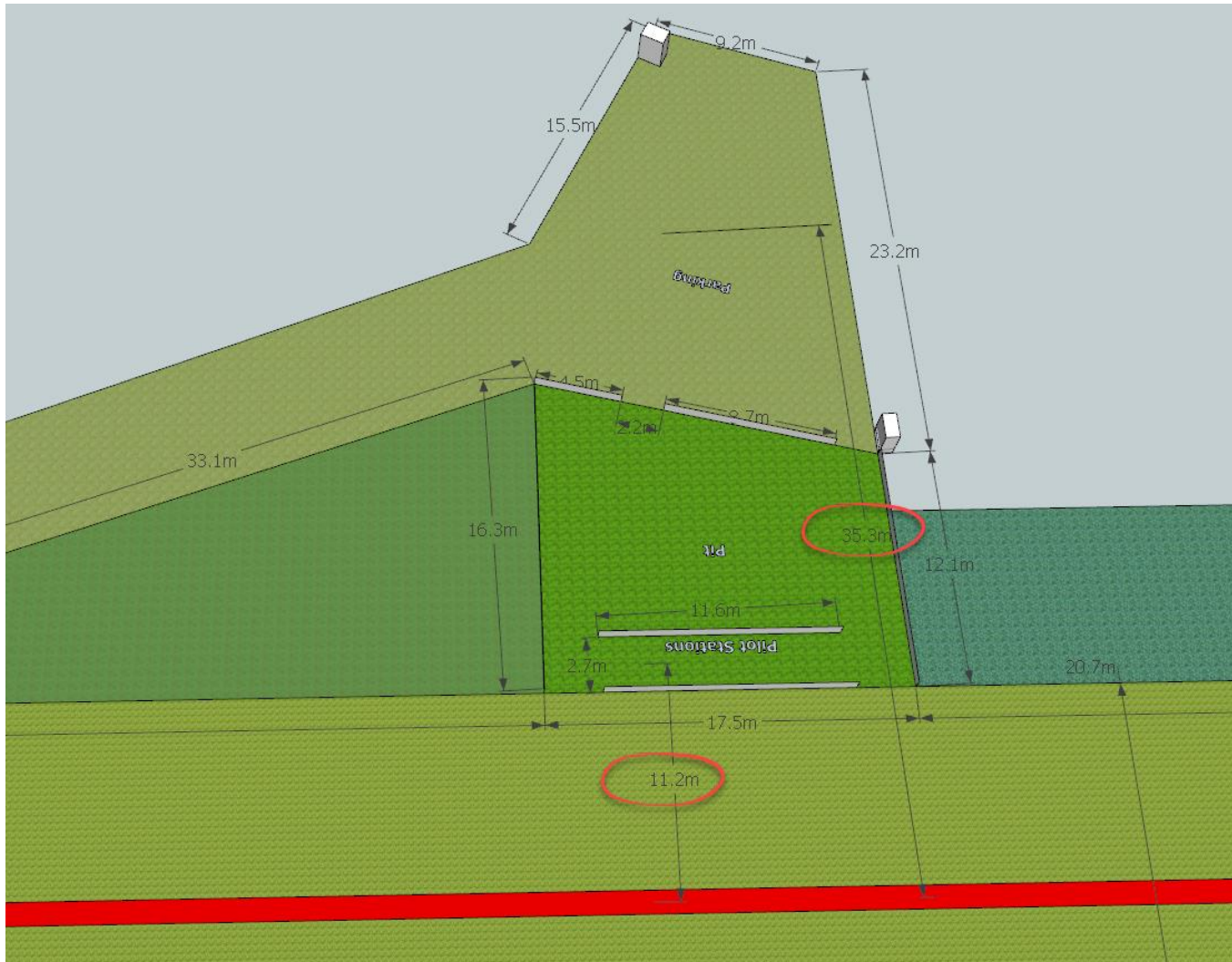
The parking is on the north side of the site. The runway is oriented roughly east - west.

The pilot station is located at coordinates:  $45^{\circ}30'45.9''\text{N}$   $75^{\circ}31'11.9''\text{W}$  at an elevation of roughly 50 meters. It is roughly 300 meters by 100 meters.

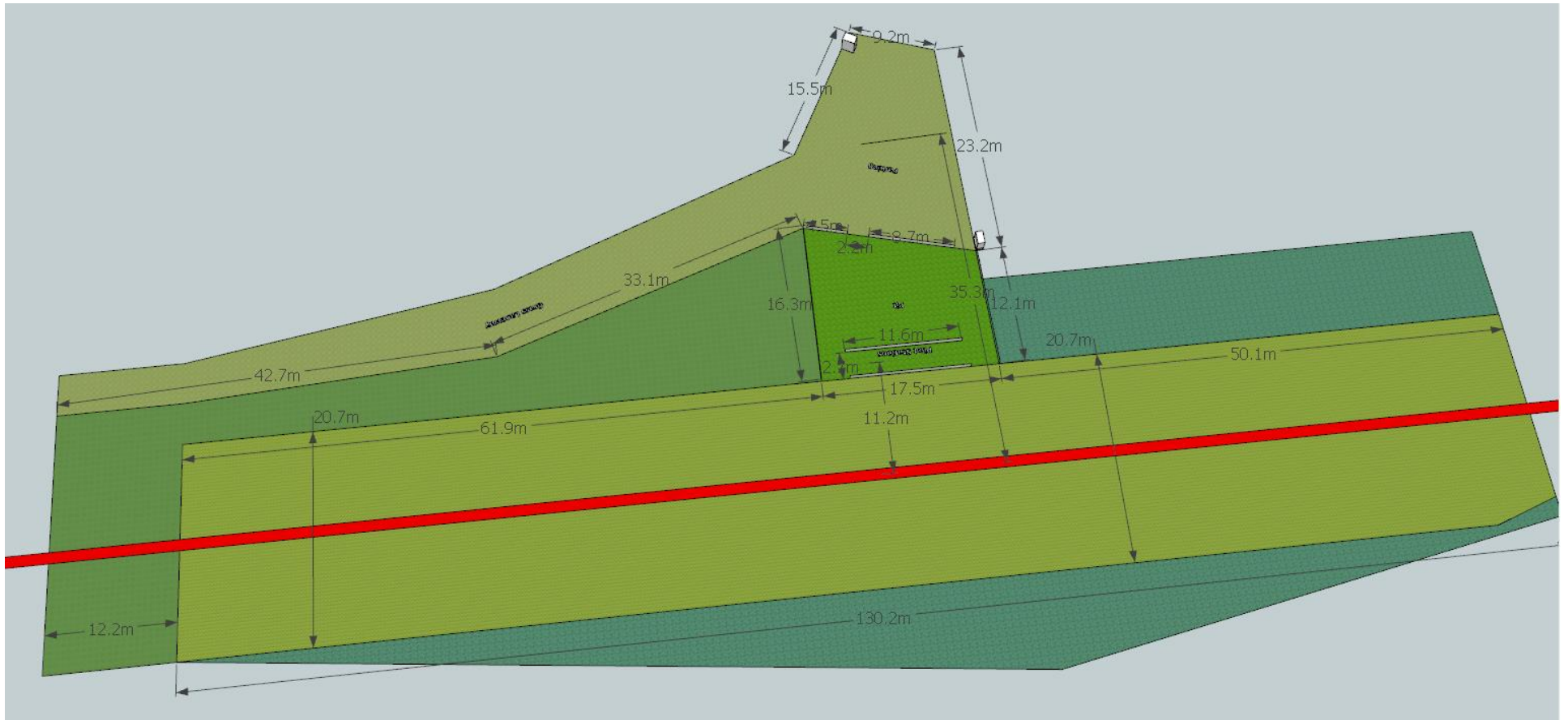


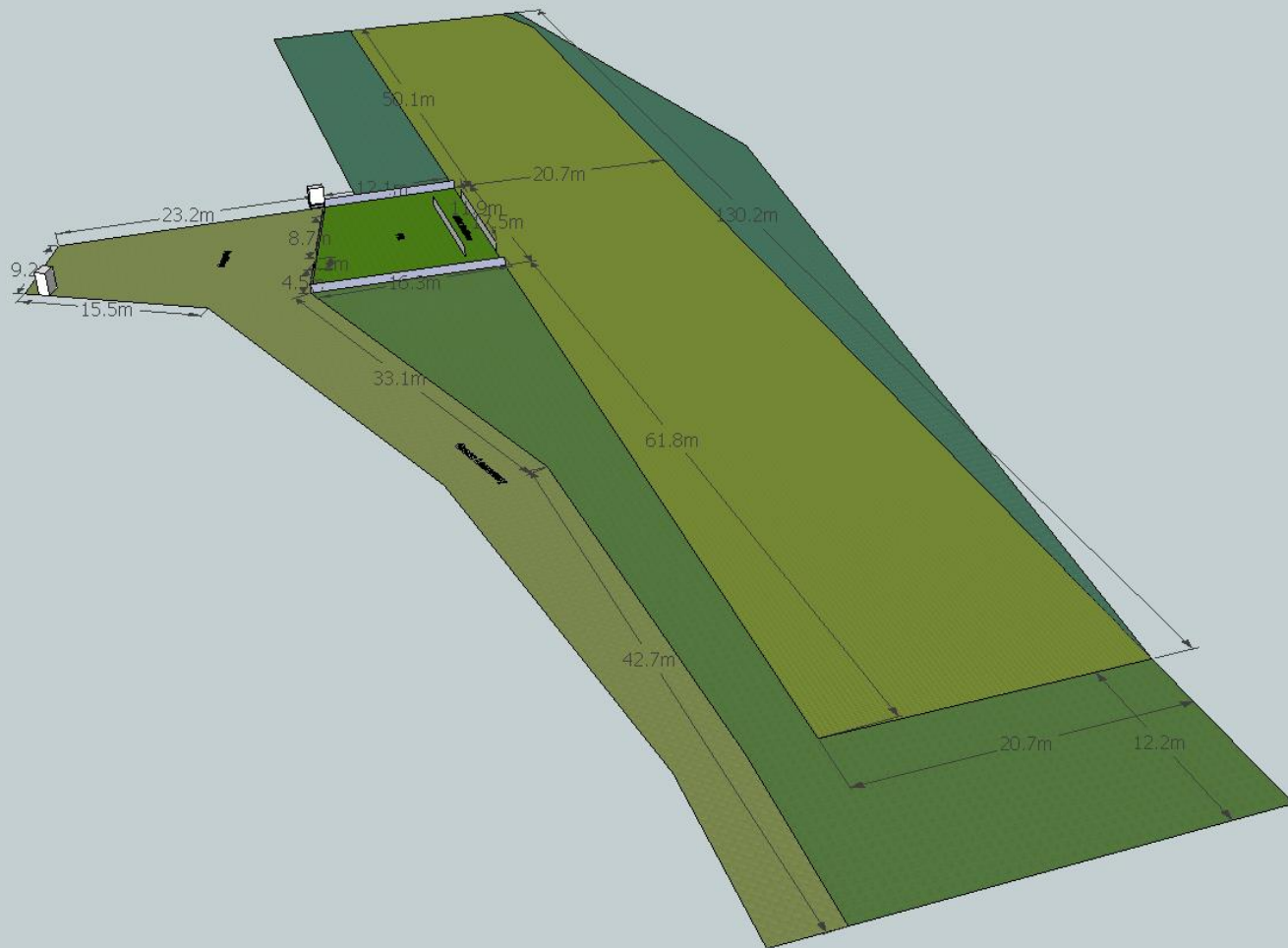
The distance from the Pilot station and the Flight line (red) is 11.2 meters. The flight line is roughly the center of the runway for most planes. Smaller planes will take off closer and use a much small flight path. Normally, only one plane flies at a time due to the nature of the club.

The distance from the Parking to the Flight line (red) is 35.3 m

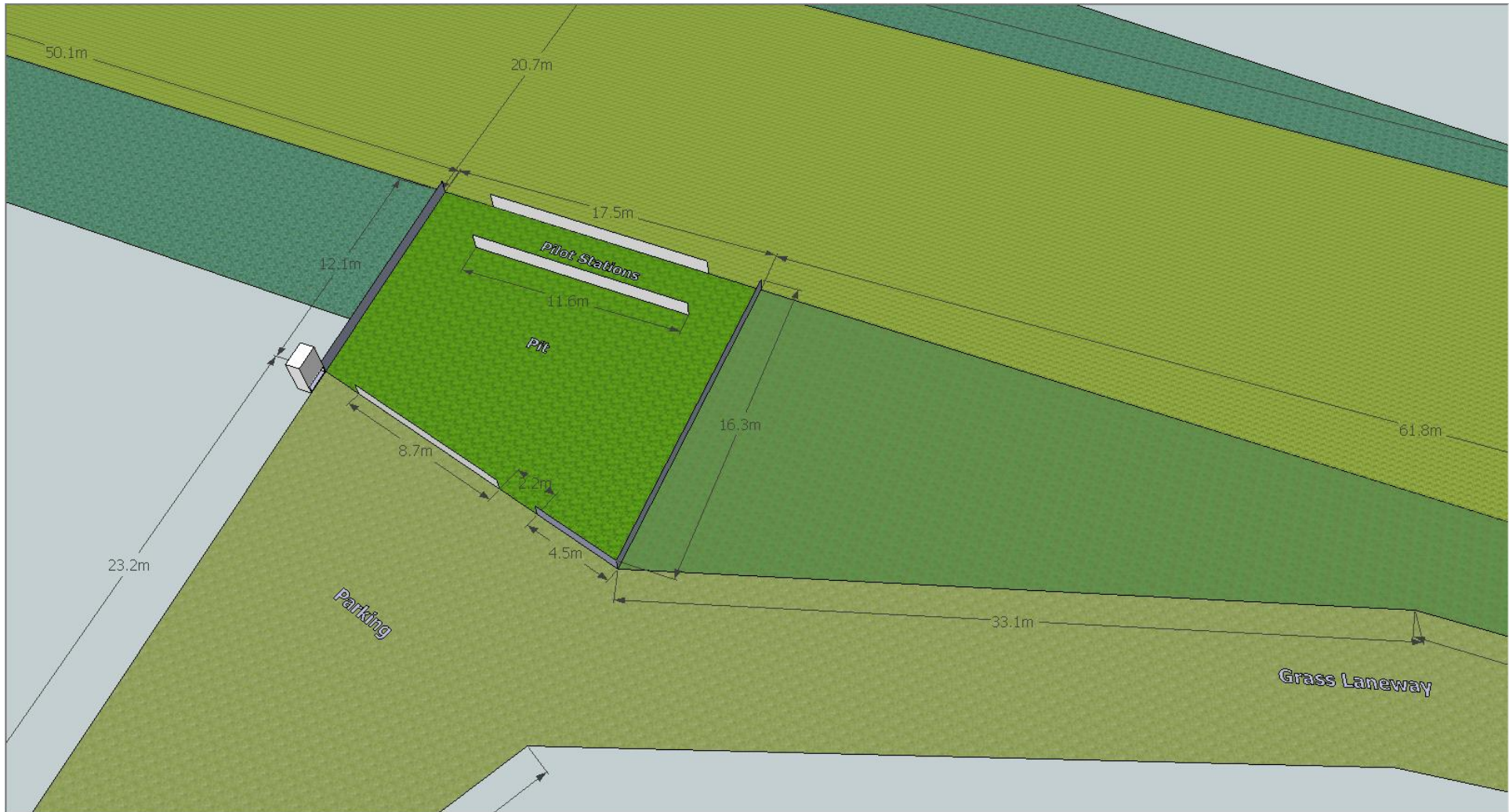


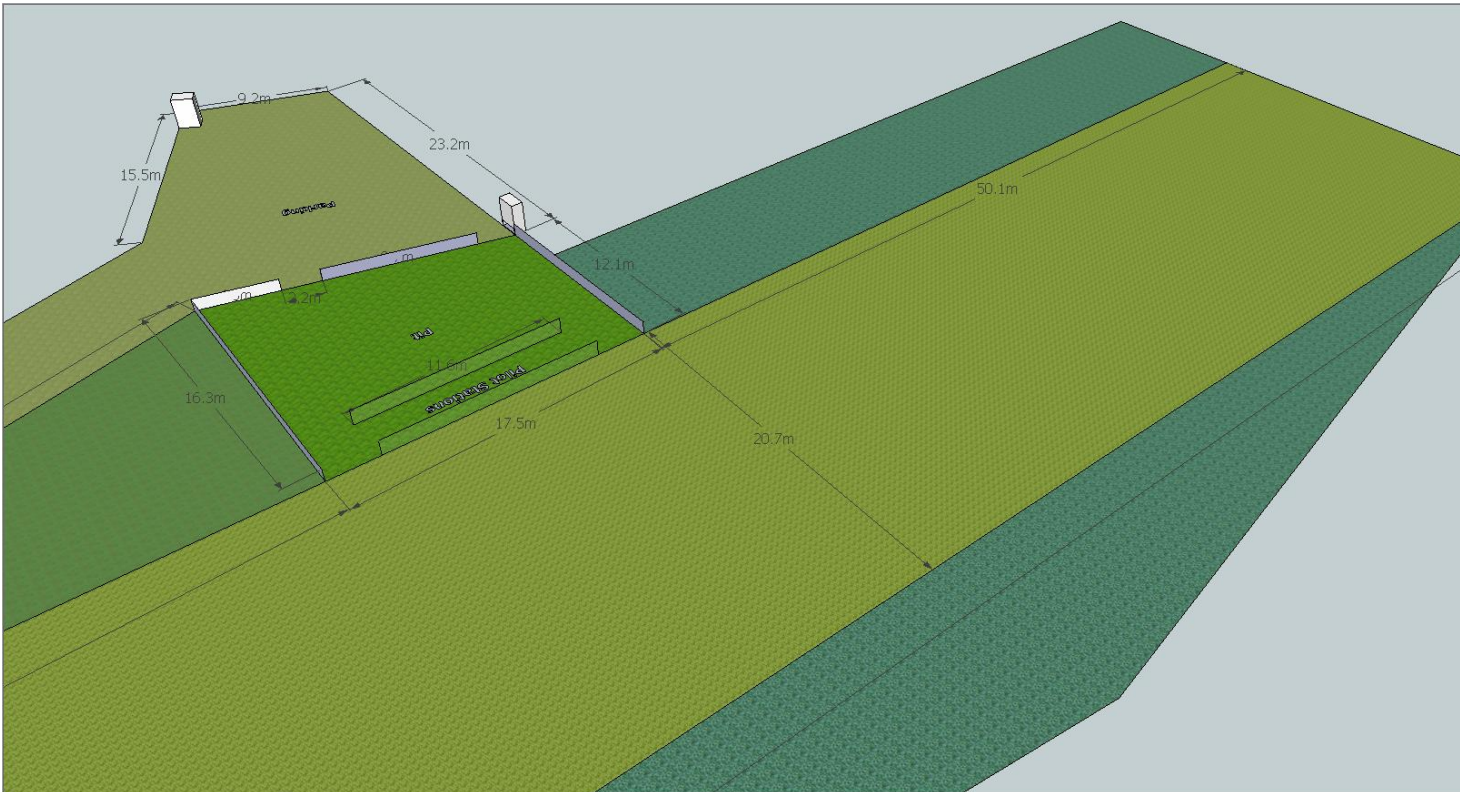
The following pages show details of the field, including dimensions. The fence is 1 meter high in front and back of the pilots, and 750 cm on the sides and back.



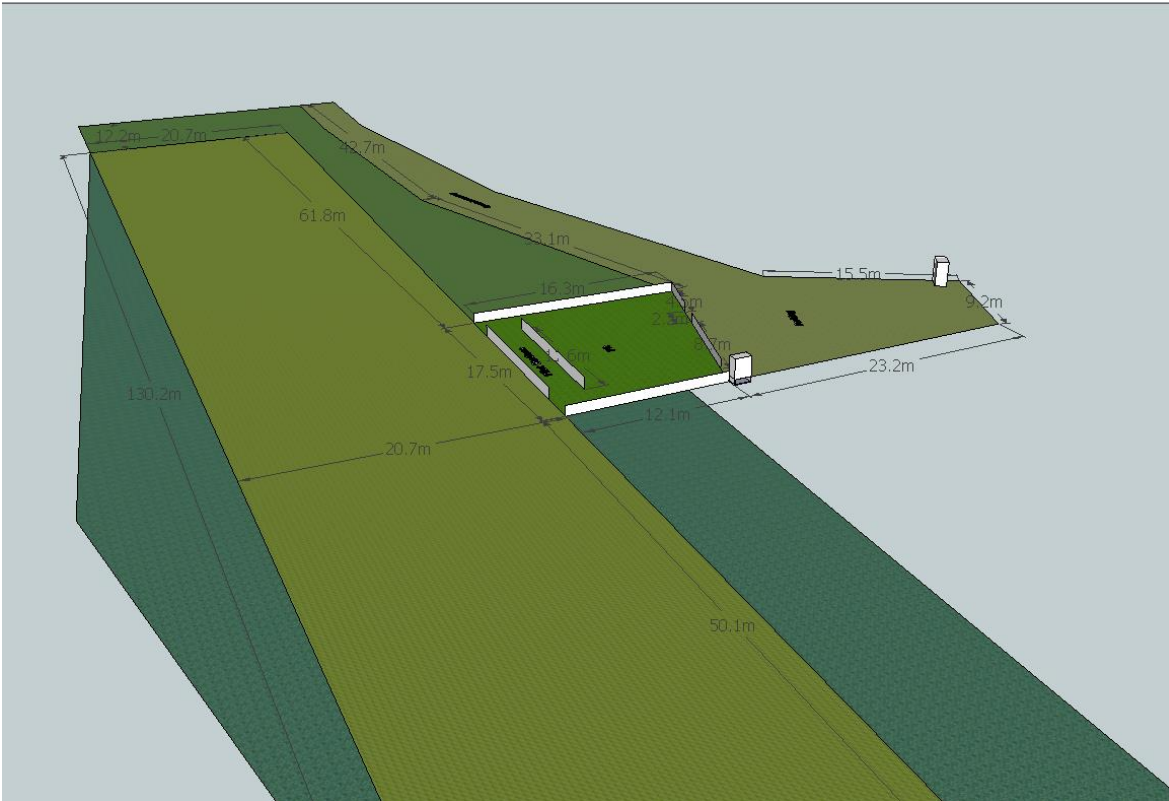




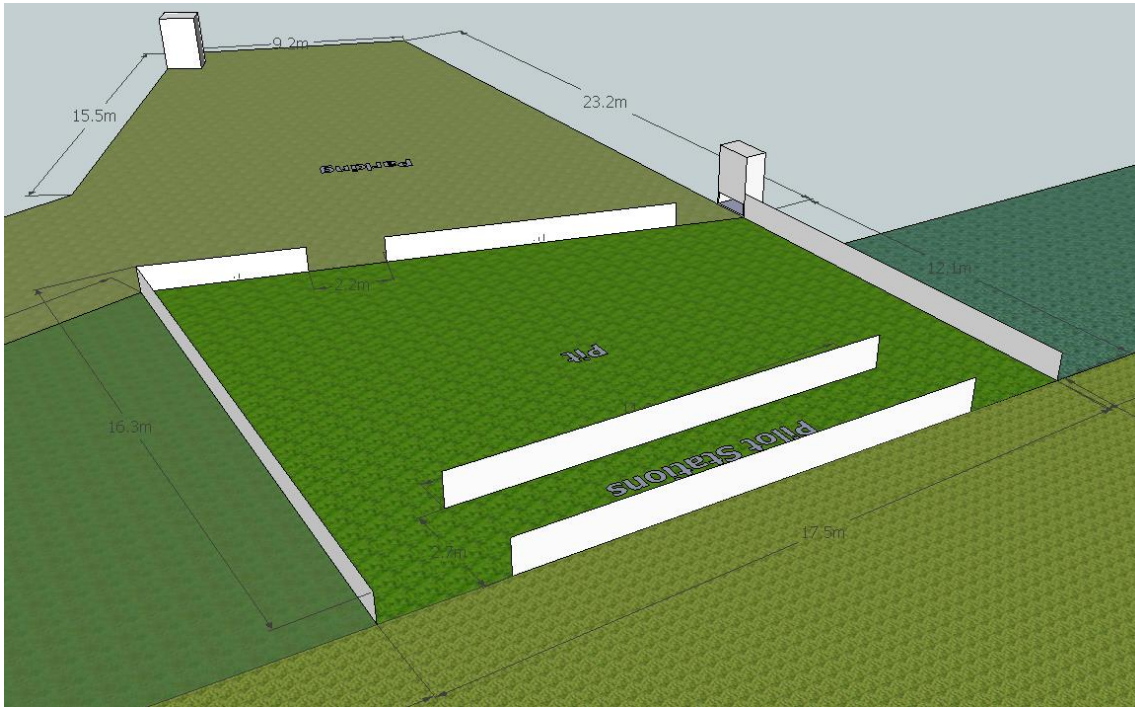












Note that the parking could not be moved further back because of a small stream, trees and water accumulation on the north side (picture taken facing west along the fence at the back of the pit area).

